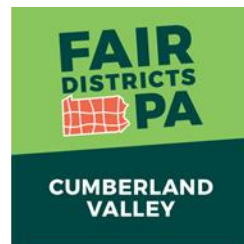


Redistricting Matters: A Nonpartisan Consensus for Cumberland County

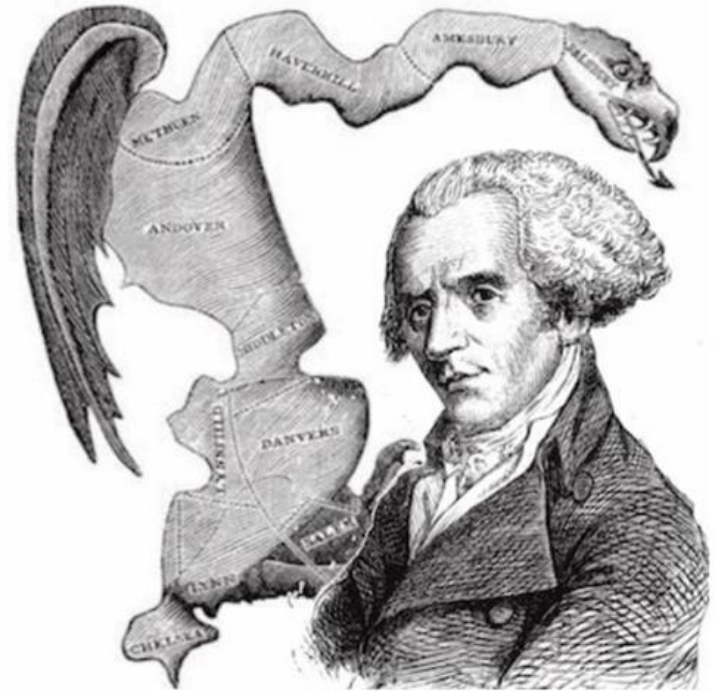


Original Gerrymander

In 1812, Massachusetts Governor Elbridge Gerry backed a redistricting plan favoring his party, with one district so convoluted that it looked like a salamander.

We've been calling the practice of manipulating electoral maps for political advantage gerrymandering ever since.

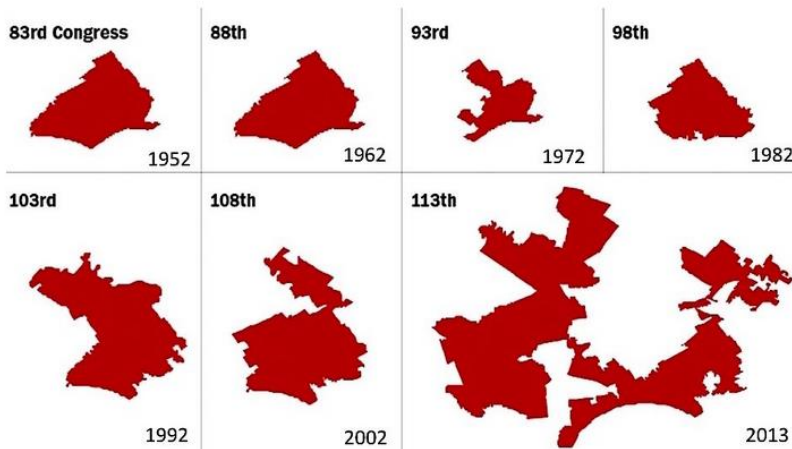
And, both major political parties are equal offenders.



Redistricting is. . .

- The process of redrawing voting district lines to reflect population changes after every U.S. Census
 - U.S. Congressional districts
 - State legislative districts
 - PA Senate
 - PA House
- Article II, Section 17 of the Pennsylvania Constitution mandates PA state legislative districts be drawn by a five-member commission.
- There is no federally mandated process for how U.S Congressional districts are drawn AND Pennsylvania has no laws or regulations defining a process.
- The Result. . . .

Pennsylvania is Famous



District 7 has a shape so incongruous, it's known as "Goofy Kicking Donald Duck."

- Our U.S. Congressional districts—which control who represents you in the U.S. House of Representatives—are some of **the most gerrymandered in the nation**.
- In 2016, researchers at the independent [Electoral Integrity Project](#) gave our redistricting practices an 11 out of 100—the third-worst rating in the nation.

Why Should You Care?

- Gerrymandered district lines weaken the power of our votes
- We all pay the price
 - Incumbents draw lines that protect their seats
 - Politicians feel safe—so they ignore issues you care about
 - Gridlock worsens in Harrisburg and Washington
 - People feel powerless and voter turnout goes down

How did things get so bad?

Pennsylvania
is a
national target

Big data and
mapping
technology are
available

Campaigns are fueled by outside money

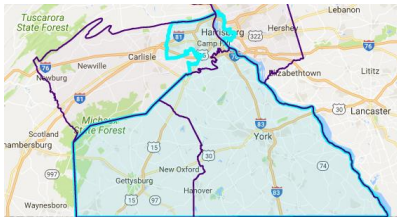


What Does This Mean for Cumberland County?

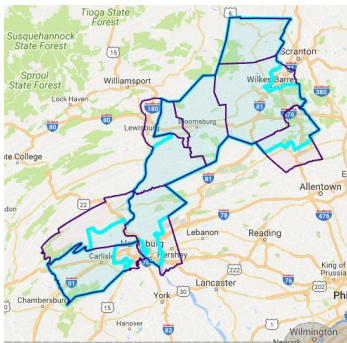
Cumberland County District Maps

U.S. Congress

District 4
Scott Perry

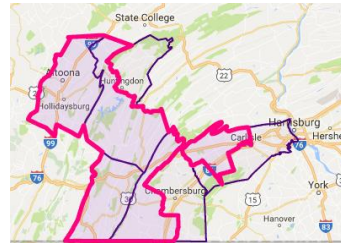


District 11
Lou Barletta

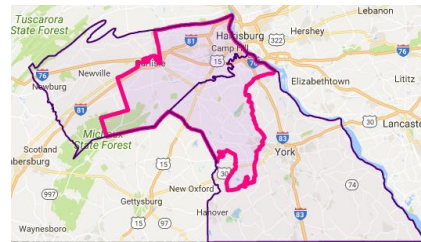


State Senate

District 30
John H. Eichelberger Jr.



District 31
Mike Regan

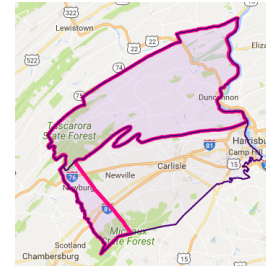


District 33
Richard Alloway II

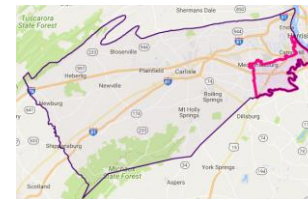


State Representatives

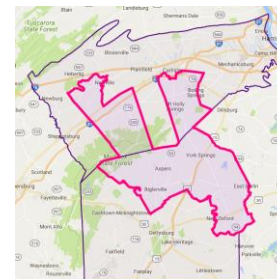
District 86
Mark Keller



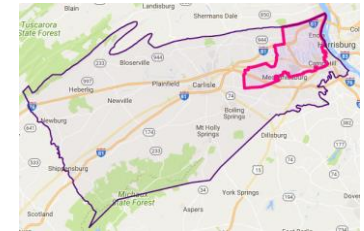
District 88
Sheryl Delozier



District 193
Will Tallman



District 87
Greg Rothman



District 92
Dawn Keefer



District 199
Stephen Bloom



We Can Change This

- Redistricting will happen after the 2020 Census—but it will only be fair if we change the state constitution first.
- Fair Districts PA is a nonpartisan, citizen-led group working to do just that.
- Bipartisan bills have already been introduced to make this happen

PA Senate Bill 22 and PA House Bill 722

Impartial

An independent citizens' commission leads redistricting efforts

Transparent

Citizens participate in the process and "closed-door" deal-making ends

Accountable

Clear standards for equality, fairness, and integrity guide the process

Cumberland County Commissioners

Panel Discussion



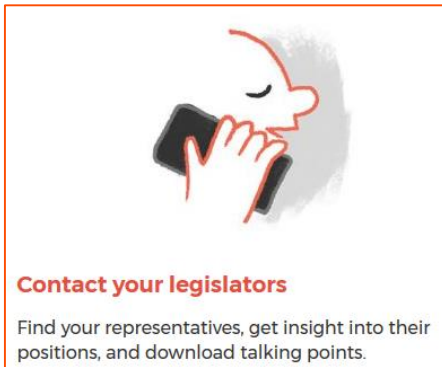
What You Can Do

1 Mail the postcard in your green bag

2 SIGN THE PETITION NOW

Asking state legislators to support redistricting bills SB 22 and HB 722

3



- Don't let "I've never done that before" silence your voice
- You will find everything you need to conquer your fears


Your legislator won't know you care about this issue unless you tell them

Any legislator representing Cumberland County signed as Co-Sponsor?

SB 22

District 30 Eichelberger
District 31 Regan
District 33 Alloway

HB 722

District 86 Keller 
District 87 Rothman
District 88 Delozier
District 92 Keefer
District 193 Tallman
District 199 Bloom

FairDistrictsPA.com

An illustration of three stylized human figures in green, red, and blue. The green figure holds a sign with the letter 'Y', the red figure holds a sign with 'E', and the blue figure holds a sign with 'S'.

Pass a local resolution

See how you can get your city, borough, township, or county government to pass a resolution in favor of fair redistricting.

Cumberland County municipalities passed resolution

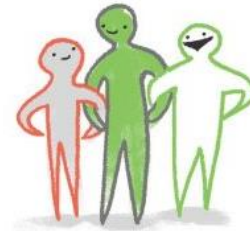
Cumberland County
Carlisle Borough
East Pennsboro Township
Silver Spring Township
Upper Allen Township

FairDistrictsPA.com



Volunteer with us

We need help with everything from public speaking to event planning to administrative support. Sign up now.



Join a local group

Find a Fair Districts PA group in your community, and join them for events like letter-writing nights and working groups.



Write an op-ed

Learn how to get a letter or editorial published in your local newspaper.



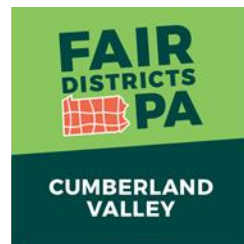
Donate

We're a volunteer-led organization. Donate now to support our education or our advocacy work.

Q & A

Redistricting Matters: A Nonpartisan Consensus for Cumberland County

THANK YOU



What are You Going
to Do?